



Company : Santos

Well : Henry-2

Interval : 58.00 - 1033.92 meters

Created : 07/Sep/2008 5:01:48 AM

INTEQ

### HENRY-2 PRESSURE DATA PLOT

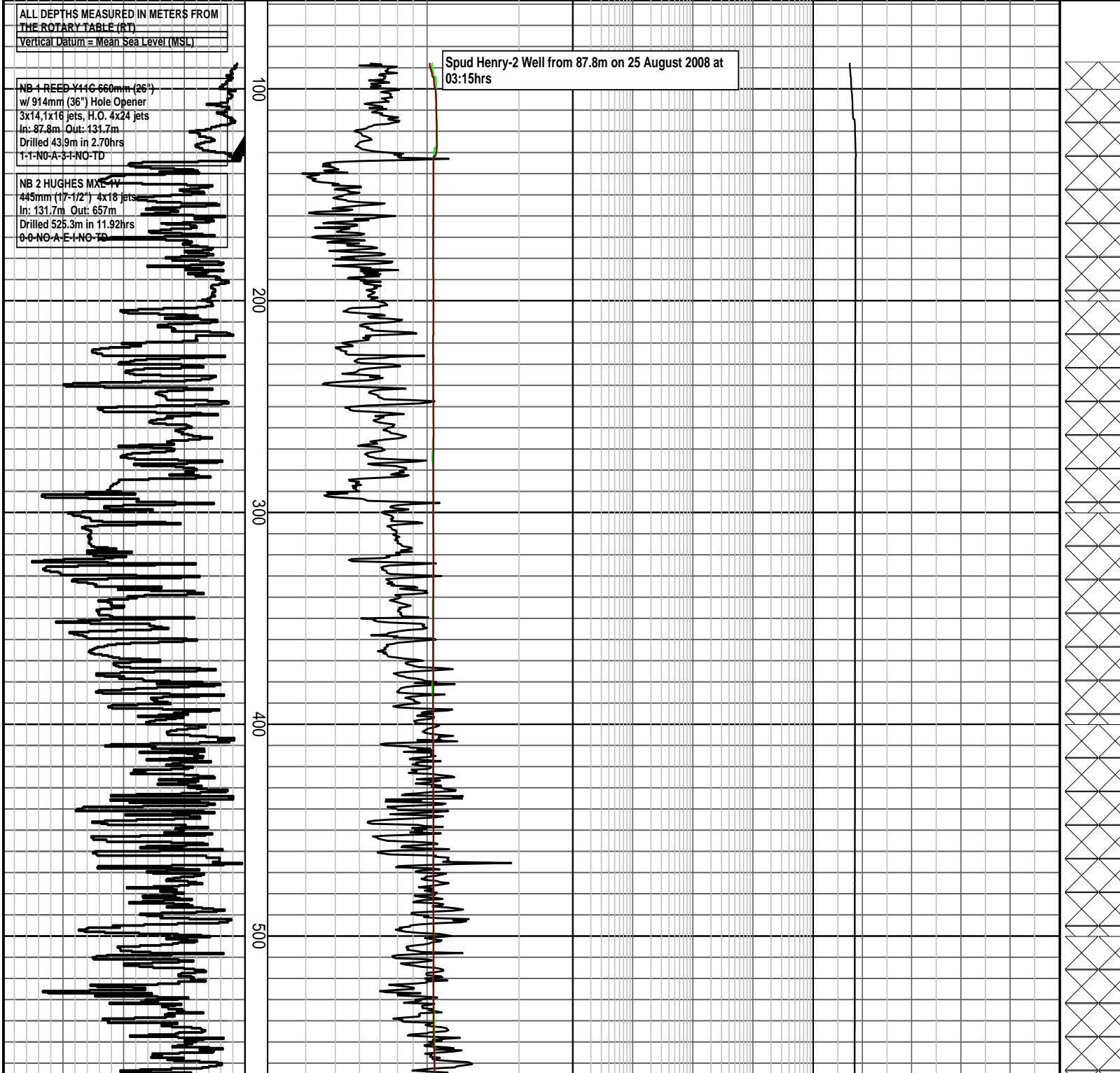
Rate Of Penetration ROP	Drilling Exponent DXC	Gas Data TOTAL GAS	Temperature Data MUD TEMP IN	INTERPRETED LITHOLOGY
200   150   100   50 m/hr	Mud Weight In sg ECD at T.D. sg	1   10   100   1000 unit	20   40   60   80   100 degC MUD TEMP OUT degC	

ALL DEPTHS MEASURED IN METERS FROM THE ROTARY TABLE (RT)  
Vertical Datum = Mean Sea Level (MSL)

NB 1 REED Y44G 660mm (26")  
w/ 914mm (36") Hole Opener  
3x14.1x16 jets, H.O. 4x24 jets  
In: 87.8m Out: 131.7m  
Drilled 43.9m in 2.70hrs  
1-1-NO-A-3-1-NO-TD

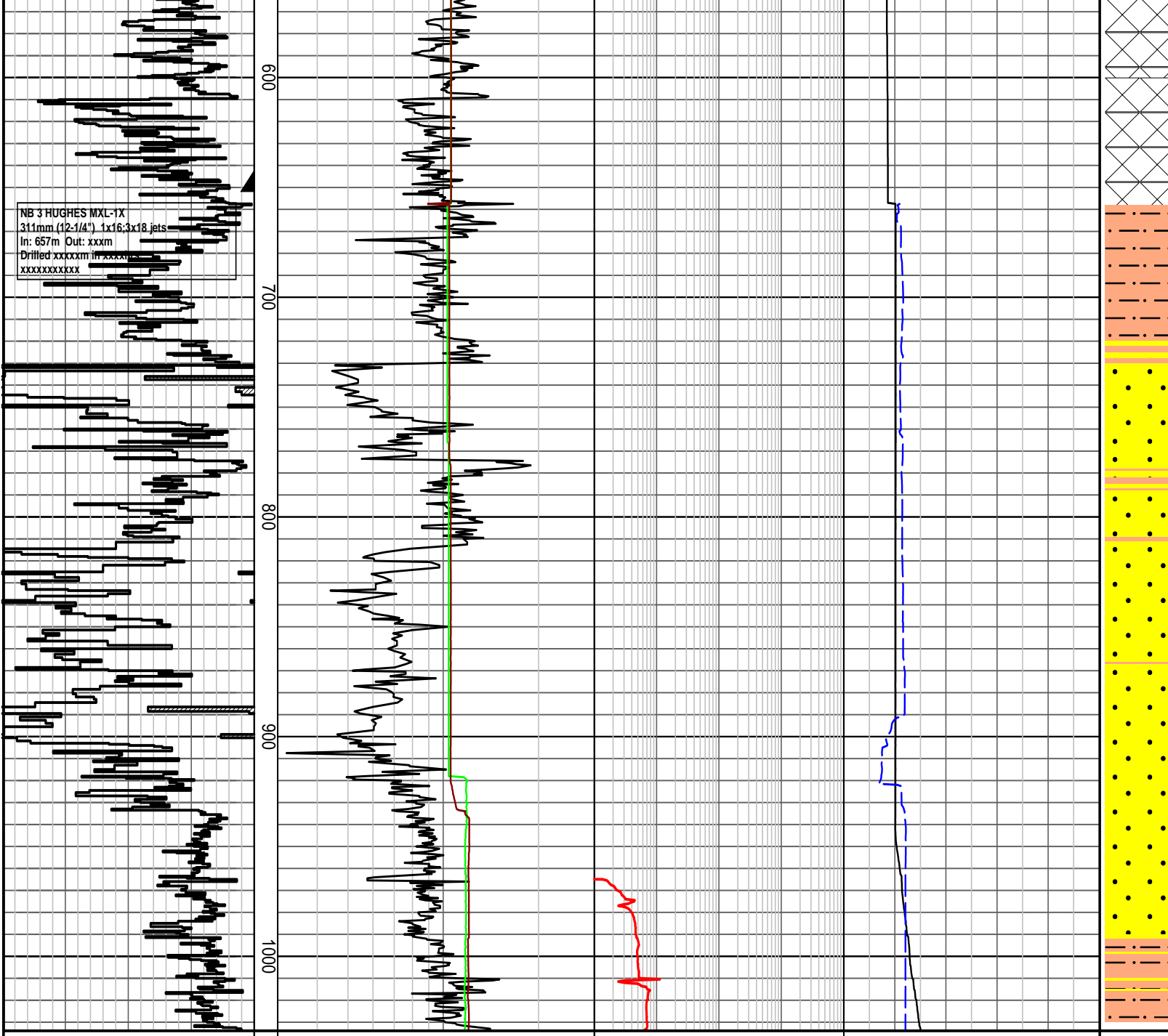
NB 2 HUGHES MXC IV  
445mm (17-1/2") 4x18 jets  
In: 131.7m Out: 657m  
Drilled 525.3m in 11.92hrs  
0-0-NO-A-E-1-NO-TD

Spud Henry-2 Well from 87.8m on 25 August 2008 at 03:15hrs



INTERPRETED  
LITHOLOGY





**HENRY-2 PRESSURE DATA PLOT**

Rate Of Penetration ROP	Drilling Exponent DXC	Gas Data TOTAL GAS	Temperature Data MUD TEMP IN	INTERPRETED LITHOLOGY
200   150   100   50 m/hr	Mud Weight In sg	1   10   100   1000 unit	20   40   60   80   100 degC	
MID meters 1:2500	ECD at T.D. sg		MUD TEMP OUT degC	